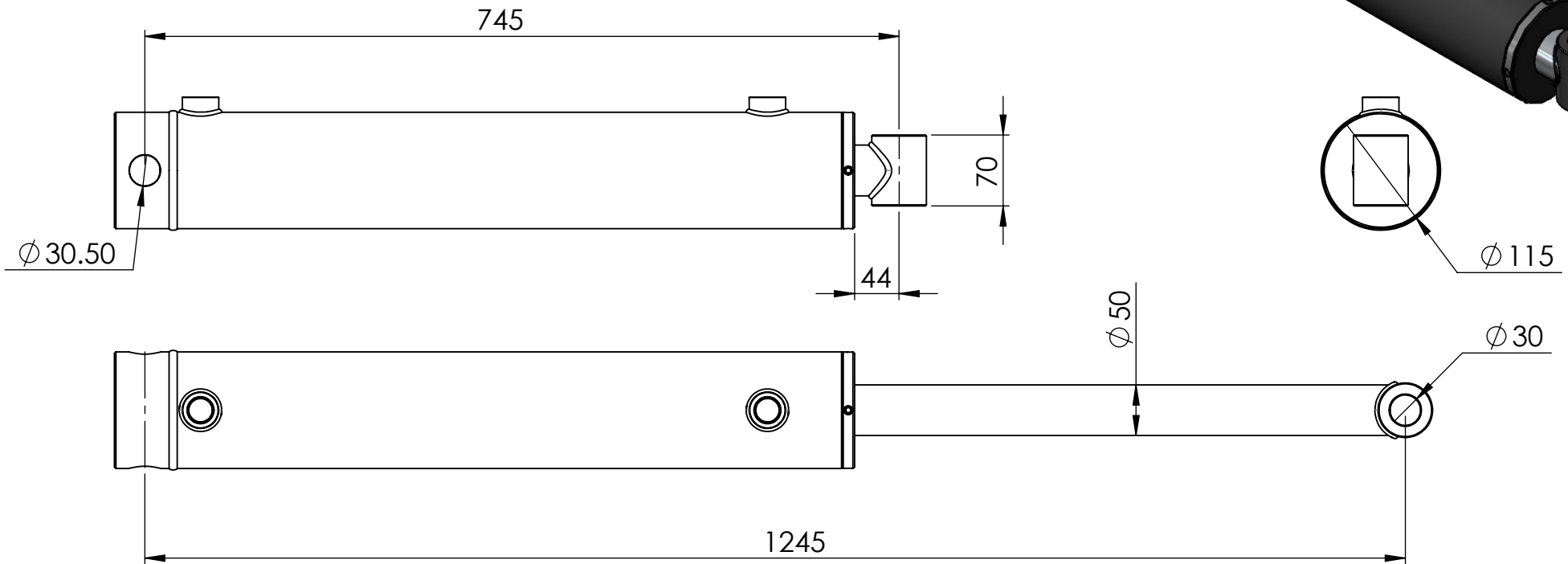
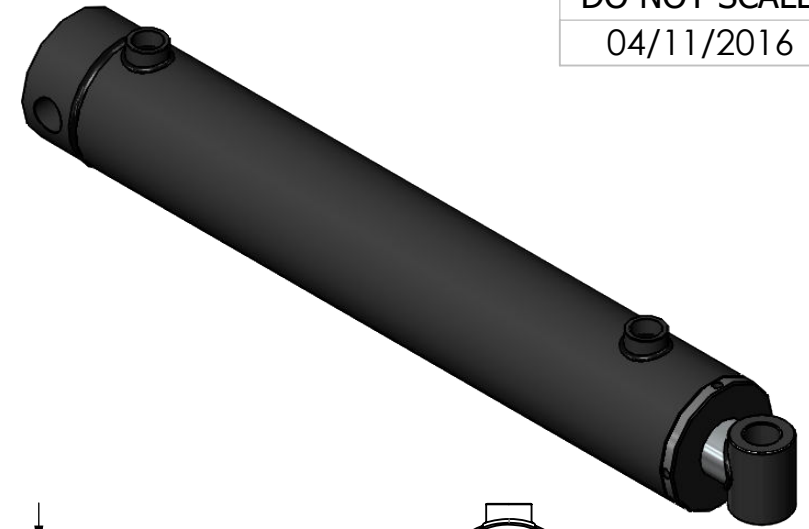


DO NOT SCALE

04/11/2016



The information contained in this drawing is proprietary to MOTUS and shall not be reproduced or disclosed in whole or in part or used for any design or manufacture except when such user possesses direct written authorisation from MOTUS

Ram Phone: 0800 66 88 74
 Phone: +64 6 879 8590
 sales@motushydraulics.co.nz
 www.motushydraulics.co.nz

DESCRIPTION	XCEL 100x50x500	RATED OPERATING PRESSURE: 3000 p.s.i	
SEAL KIT No:	SK100200	FORCE EXTENSION	12560 Kg @ 2250 psi
		FORCE RETRACT	9420 Kg @ 2250 psi
STROKE	500mm	PORTS	3/4 BSPP F
CLOSED CENTRES	745mm	BASE MOUNT	30mm
OPEN CENTRES	1245mm	SHAFT MOUNT	30mm